

PALMA MARKETS

MALLORCA REAL ESTATE



PROPERTY IN CAIMARI

PROPERTY INFORMATION

Building

- 201m2 Property Size
- 172m2 Land Area
- 20m2 Terrace Area
- 3 Bedrooms
- 2 Bathroom
- Price 1.350.000 Eur

Location

- Close to Restaurants
- Close to Shops

Views

- Pool View
- Mountain View

Features

- Air Conditioning
- Barbeque
- Built-in Kitchen
- Laundry
- Storage
- Swimming Pool
- Terrace
- Wardrobe
- Washer



Townhouse with views and rental license in Caimari

Situated in the charming village of Caimari, this delightful traditional townhouse with a holiday rental license boasts an excellent central location. It offers privacy and scenic mountain views from the terrace and patio and has typical Mallorquin features like wooden beams and stone walls. The property went through an full interior reform in 2024 and is now welcoming its new owner.

This beautiful Townhouse in Caimari, Mallorca consists of a ground floor featuring a bedroom, bathroom, living room, dining room, and kitchen, leading to a the patio and garden with a pool and an outdoor kitchen with plenty of space to host guest. The upper floor of the house includes two additional bedrooms, a large bathroom, and access to the upper terrace of 20 sqm for enjoying the stunning mountain views and evening sun.

The property is reformed to the highest standard and features local materials and soft colors. Floors are a combination of micro cement and restored traditional tiles and the walls are lime rendered in a light beige tone. The plunge pool offers a relaxing and inviting outdoor environment.

The house is equipped with central heating and an air-con. The property holds a license for holiday rentals (ETV) and is conveniently within walking distance of a small supermarket. There is a storage room perfect for bicycles accessed directly from the street. Parking is found on a nearby street.

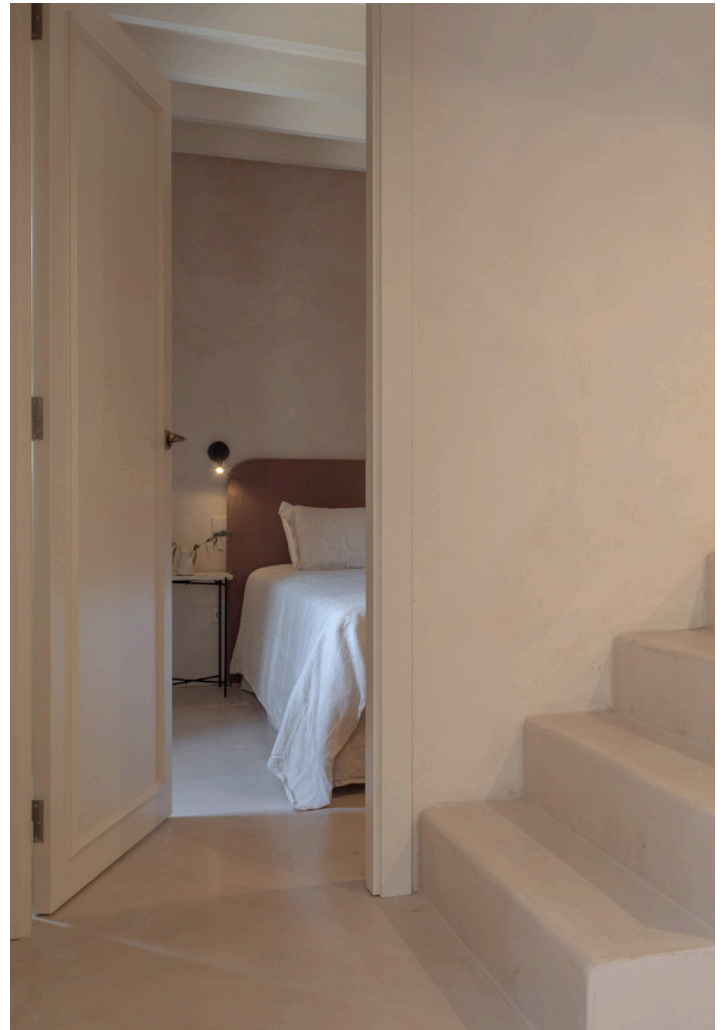
Caimari is located in the municipality of Selva and is a nature haven at the foot of the Tramuntana mountains – known for its olive production and all its hiking trails and famous cycling routes. With several villages located close to each other – Selva, Moscardi and Campanet – this area offers plenty of cafés and restaurants nearby. Palma is reached in 35 minutes. This presents a fantastic opportunity for those seeking a holiday home with a rental license in the Serra de Tramuntana mountains.







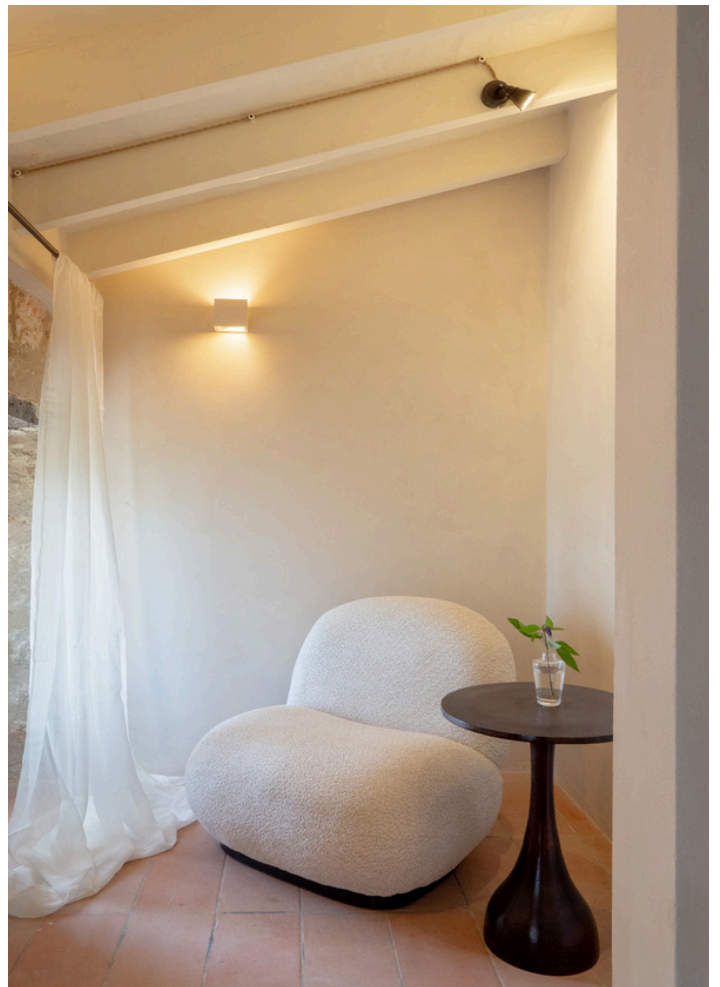






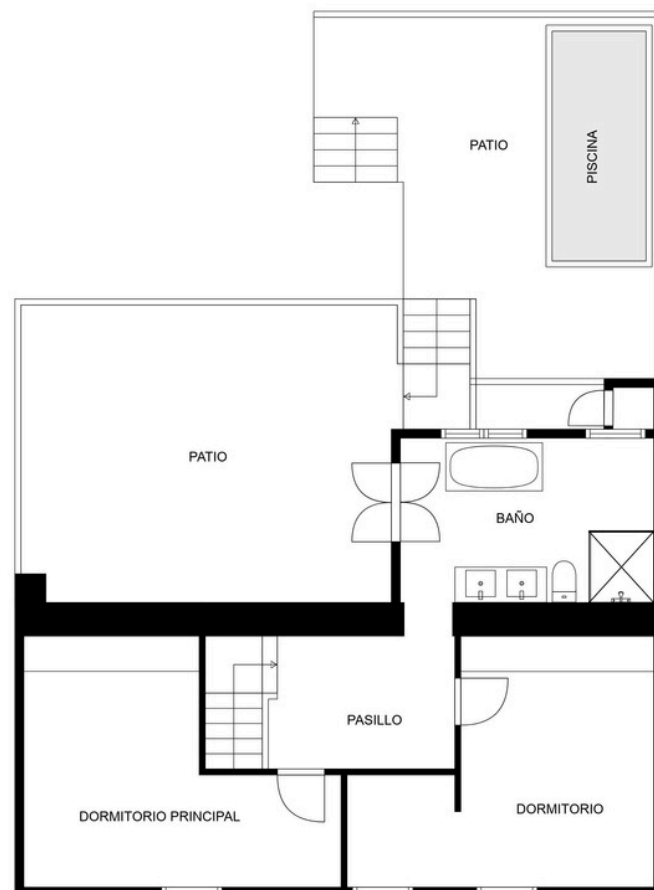
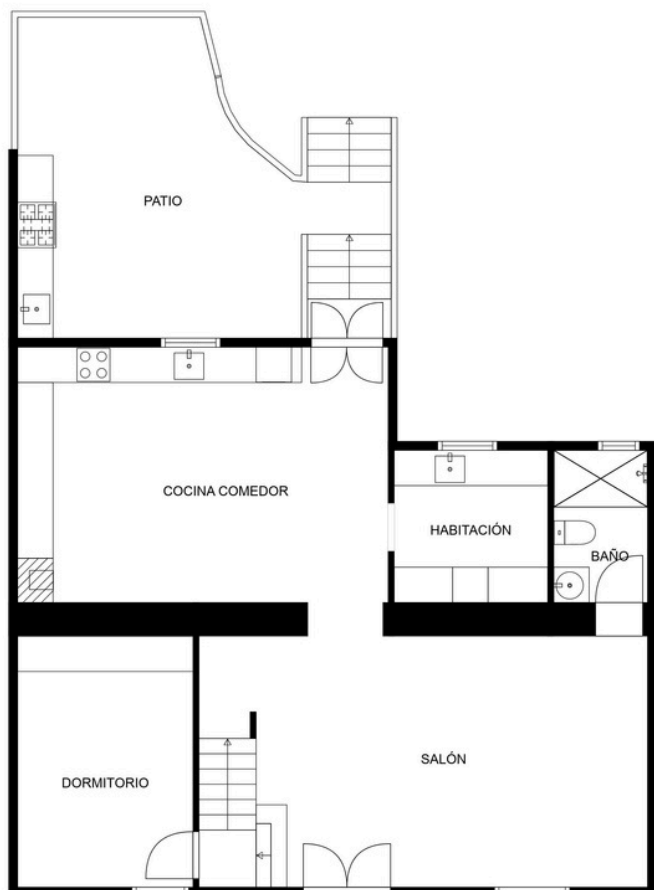












LAS MEDIDAS SON CALCULADAS UTILIZANDO LA TECNOLOGÍA CUBICASA. SON DE ALTA FIABILIDAD PERO NO GARANTIZADAS.