



Charming Penthouse In Old Town, Palma

Total Surface
289m² (approx)

Bedrooms
3

Swimming Pool
No

Total Living Area
184m²

Bathrooms
3

Views
Cathedral/Sea

Terrace
105m² (approx)

Parking Space
Yes

Storage
Yes

PRICE: 3.600.000 EUR



Property Description

This exceptional penthouse featuring several terraces in the heart of Palma's historic old town offers a unique opportunity for discerning buyers. With terraces totaling 105 sqm, this residence has stunning 360-degree views encompassing the old town, the bay, and distant mountains. Situated at one of the most prestigious addresses, this penthouse boasts breathtaking vistas of Palma's cathedral, Basilica Sant Francesc, and the cathedral of Santa Eulalia. The building, elevated above its neighbors, ensures unique unobstructed views from its outdoor areas.

Upon entering this duplex penthouse, spanning 184 square meters in a historic building, you're greeted by a spacious reception area leading to three bedrooms and stairs accessing the social areas. On one side, there's a master bedroom with an en-suite bathroom, while on the other side are two double bedrooms, each with en-suite bathrooms. Upstairs, the living room and kitchen open onto a terrace on the same level perfect for breakfast and lunch, offering cathedral views. This expansive terrace includes a dining area, barbecue, and ample space for outdoor furniture. Additional terraces above provide panoramic views of the old town, along with an infrared sauna and outdoor shower. The top terrace boasts superb 360-degree views, including the sparkling sea.

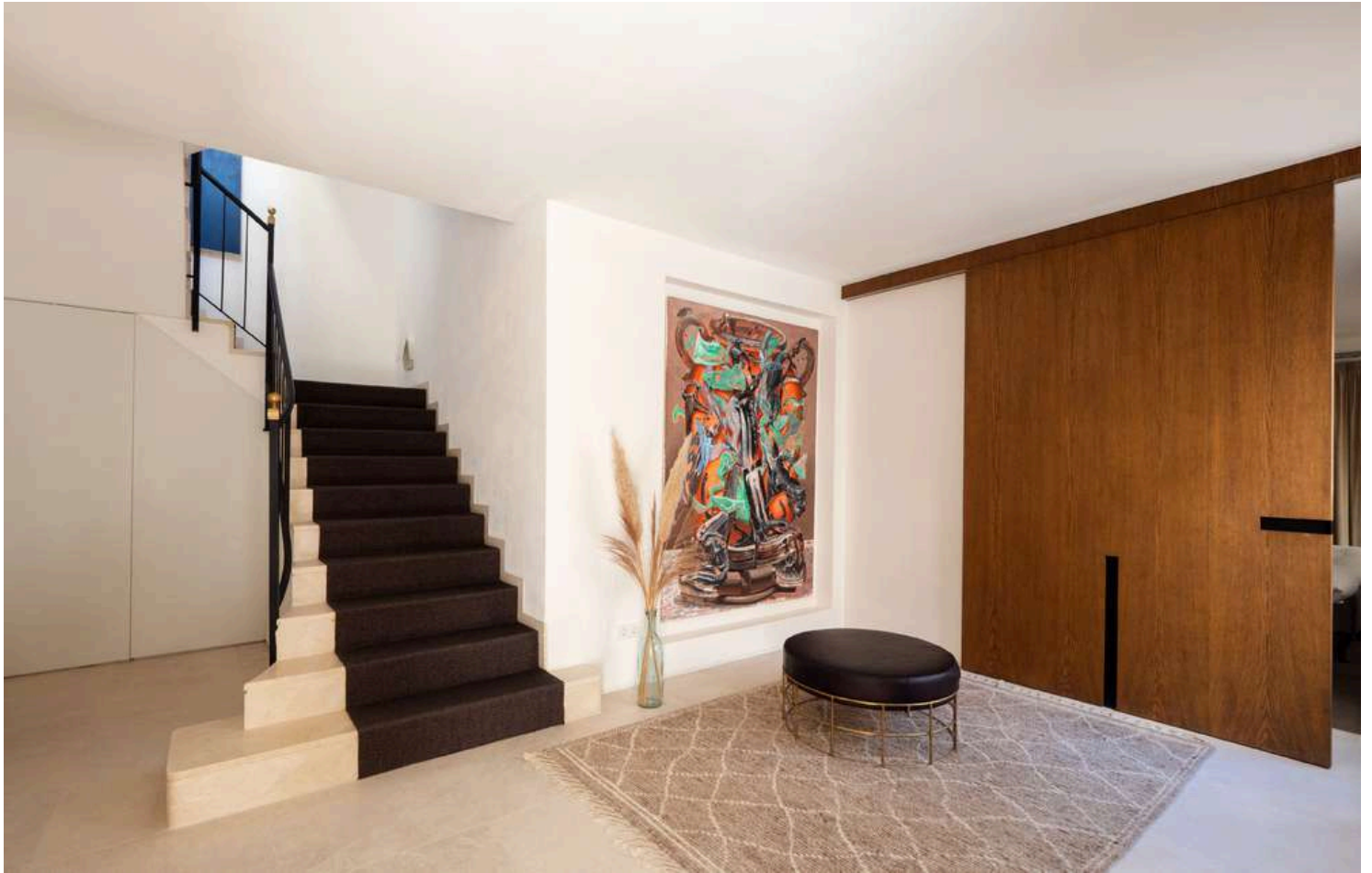
This residence is meticulously designed with custom closets in all bedrooms, an upstairs guest bathroom, a laundry room, and a fireplace. Central heating, integrated air conditioning, a Tylö infrared sauna, and an outdoor shower offers additional comfort. The building is equipped with a lift and the penthouse is sold with a storage and garage. For more details about this exceptional property, please don't hesitate to inquire.





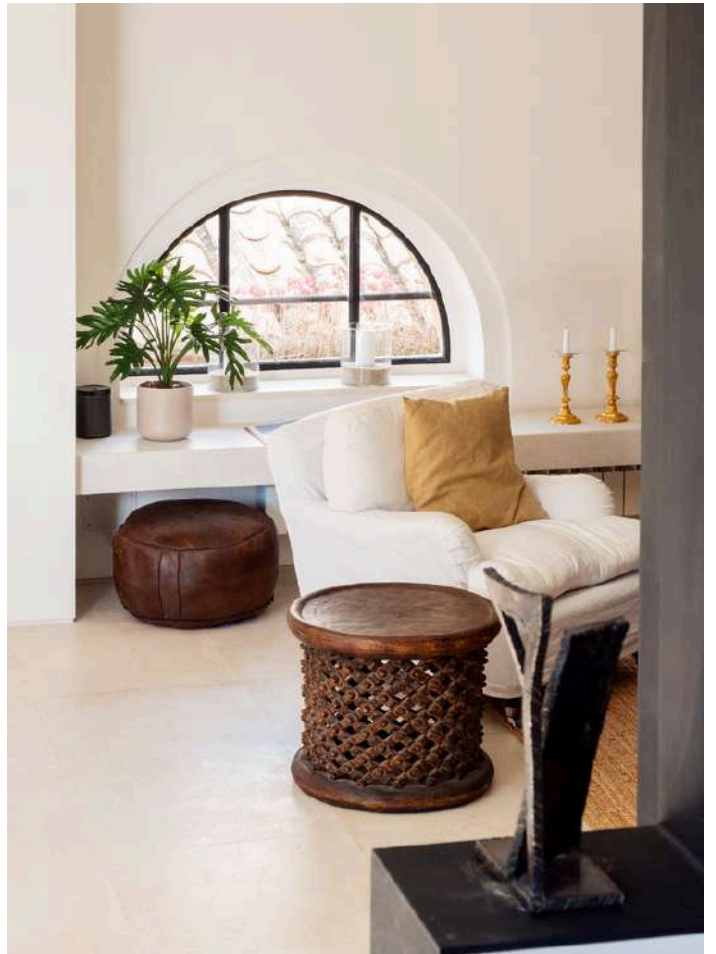
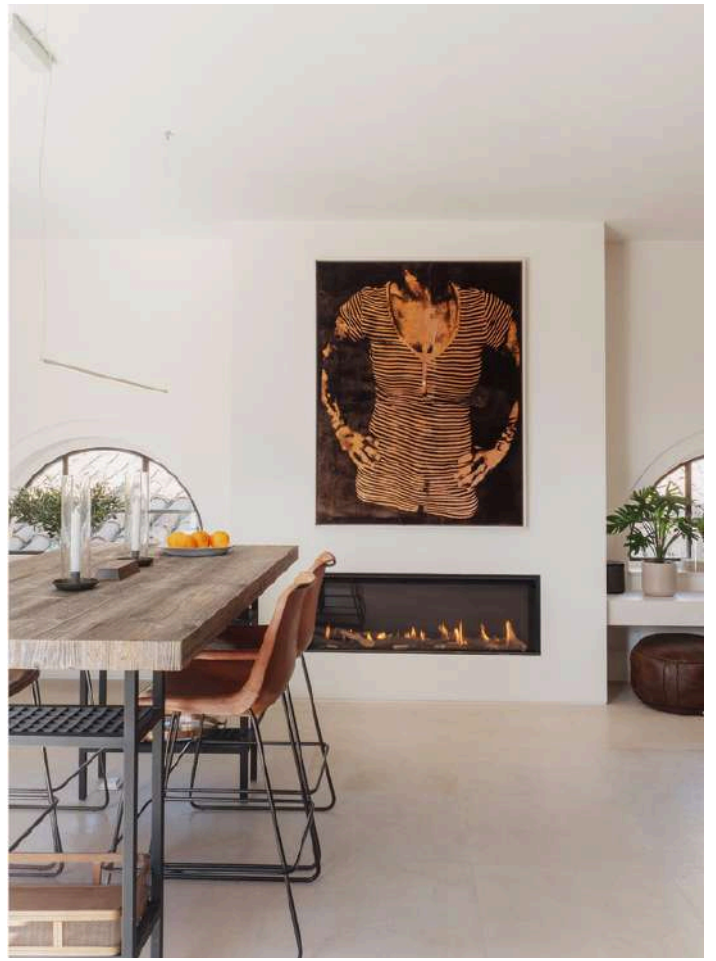


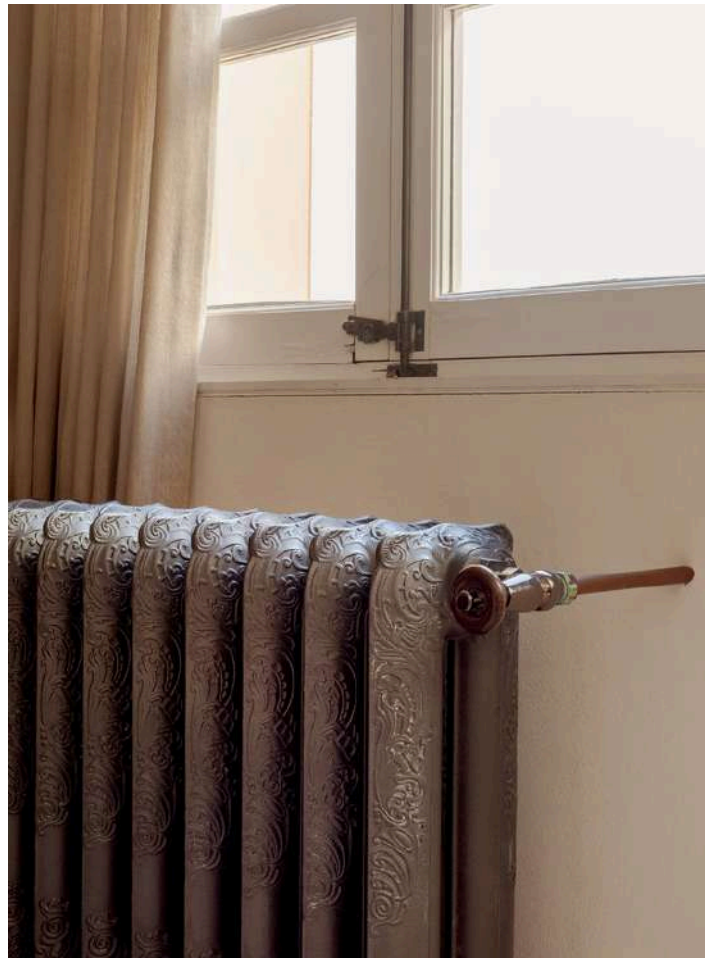




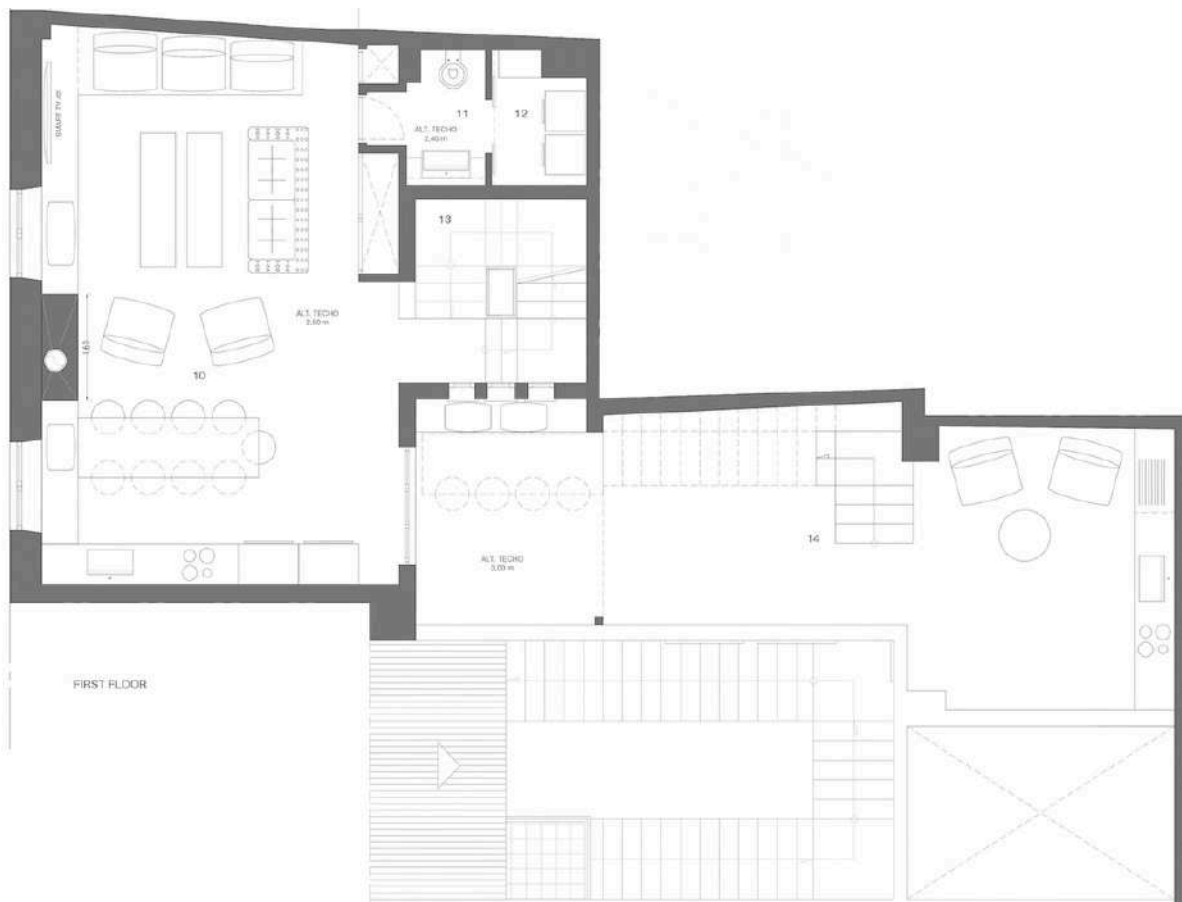


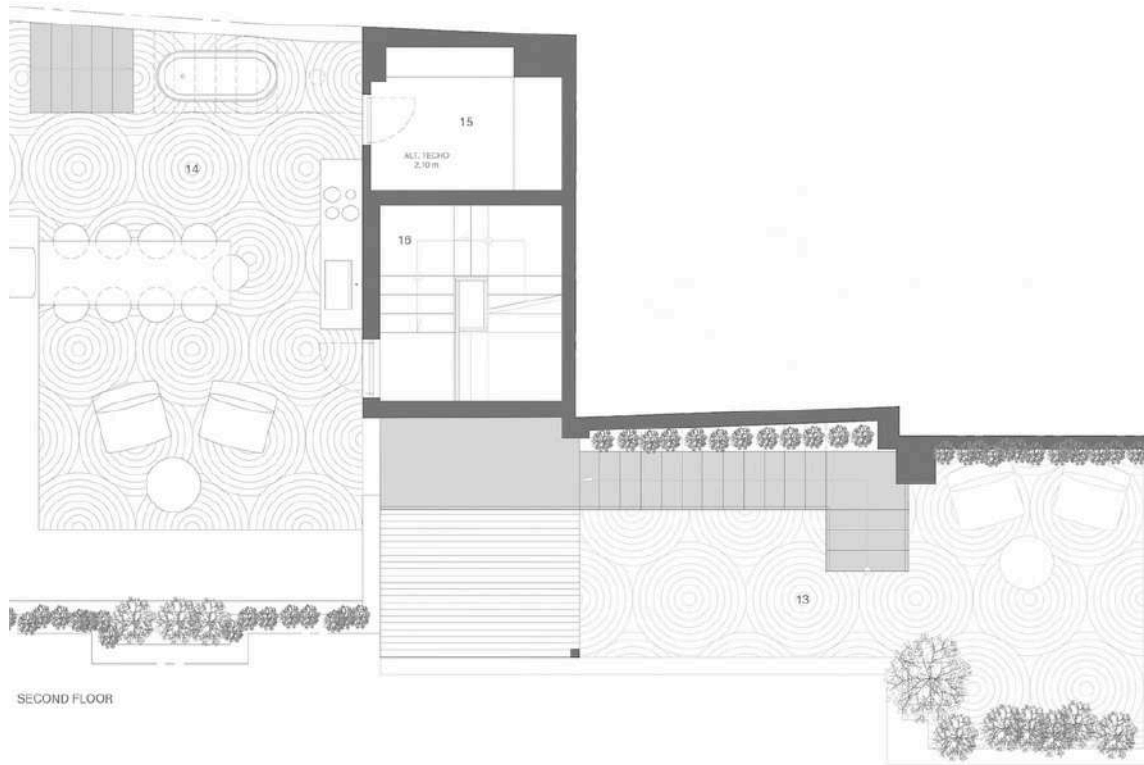




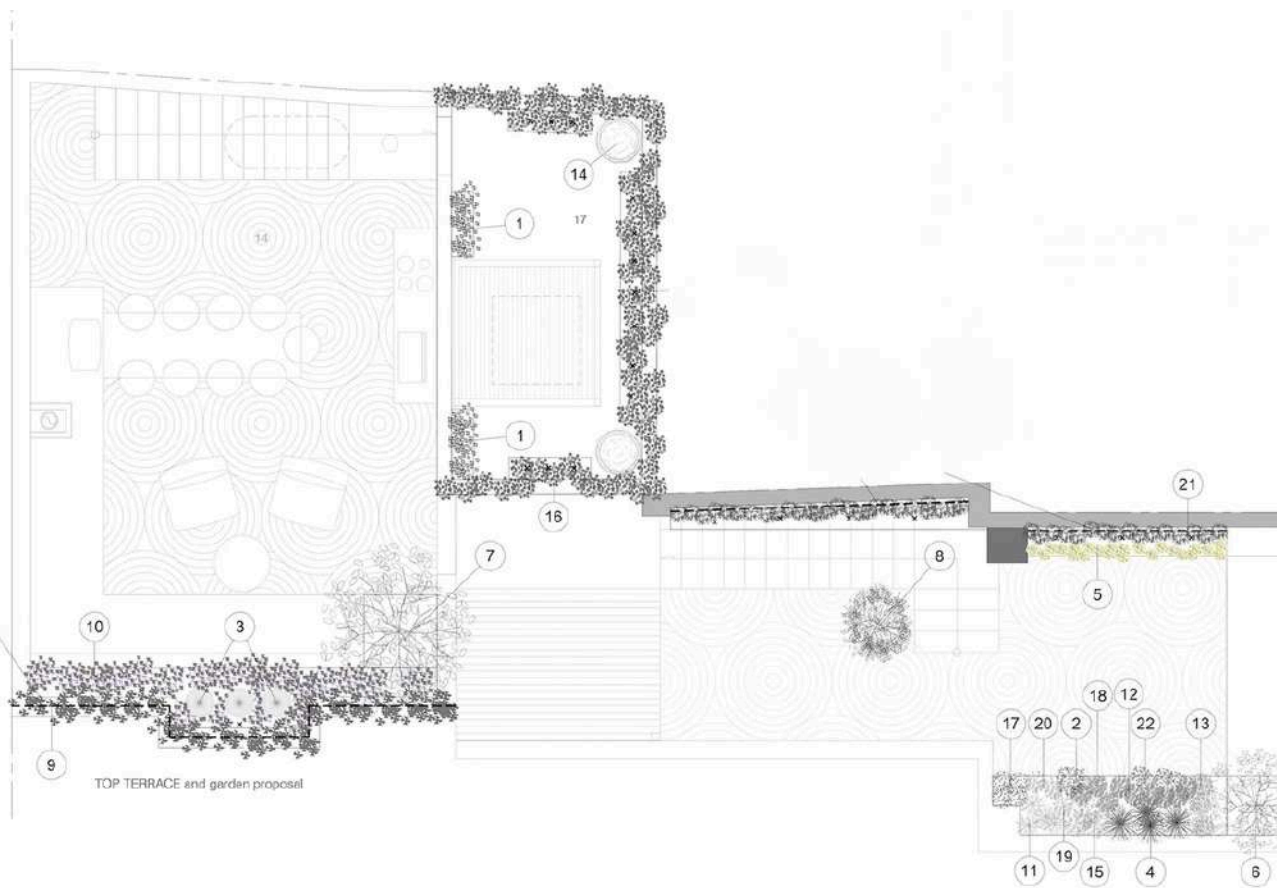








SECOND FLOOR



TOP TERRACE and garden proposal