

PALMA MARKETS

MALLORCA REAL ESTATE



PROPERTY IN SON ESPANYOLET

PROPERTY INFORMATION

Building

- 145m2 Property
- 2 Bedrooms
- 2 Bathrooms
- 31m2 Terrace Area
- Price: €970.000

Location

- Son Espanyolet, Palma
- Close to Schools

Views

- City Views

Features

- Air conditioning
- Built in Wardrobes
- Central Heating
- Guest Toilet
- Swimming Pool
- Terrace



Stylish duplex with private rooftop retreat in Son Espanyolet

Discover modern Mediterranean living in this beautifully designed duplex apartment, forming part of an exclusive three-home development in one of Palma's most sought-after residential districts. Situated in the heart of charming Son Espanyolet, the location places you just steps from the vibrant atmosphere of Santa Catalina and within comfortable walking distance of Palma's bustling city centre.

Covering approximately 145 m², the residence offers an ideal layout with two generously sized bedroom suites — each featuring built-in wardrobes and a private bathroom. The main living level presents a bright open-plan space combining lounge and kitchen, designed to enhance natural light and everyday comfort.

Ascending to the upper floor, you'll find the sleeping area alongside a spacious rooftop terrace of around 31 m². Complete with a private plunge pool of approx. 8 m², this outdoor sanctuary invites you to relax, entertain, and savour panoramic sunsets above the neighbourhood. A rare luxury right in the city.

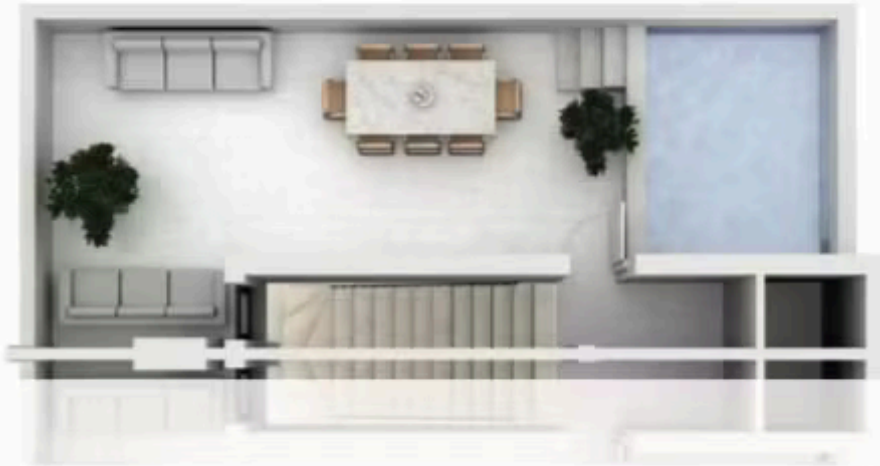
Nestled in a peaceful street surrounded by amenities, the home is just moments from a local tennis club, reputable schools, parks, shops, cafés and essential services. Completion and handover are expected in November 2025.

A unique opportunity to enjoy contemporary architecture, privacy, and an unbeatable lifestyle — all within one of Palma's most promising areas.

Son Espanyolet offers the perfect blend of neighbourhood charm and urban convenience. Characterised by low-rise properties and private gardens, it maintains a sense of community while benefiting from close access to Santa Catalina's culinary scene, Palma's harbour, and the acclaimed Santa Catalina market. With excellent schools nearby and Bellver Castle within walking distance, it is a highly desirable location for families and professionals alike.



PLANTA ATICO



PLANTA SEGUNDA



PLANTA PRIMERA

