

PALMA MARKETS

MALLORCA REAL ESTATE



PROPERTY IN SON ARMADAMS

PROPERTY INFORMATION

Building

- Property Size: 445m²
- Terrace: 205m²
- 5 Bedrooms
- 3 Bathrooms
- Price: 4.200.000 Eur

Features

- Air conditioning
- Terrace
- Garage
- Elevator
- Guest toilet

Location

- Close to schools

Views

- Sea views



Luxury refurbished penthouse in Son Armadams with panoramic views

Discover the finest of Palma living in this exquisitely refurbished luxury penthouse, ideally located in the prestigious Son Armadams district. Designed to embrace Mallorca's natural beauty, the property features three generous terraces with stunning panoramic views across the city, the bay, and the surrounding mountains.

The crowning jewel is the expansive rooftop terrace—an exceptional outdoor haven complete with an outdoor shower, pre-installation for a barbecue, and space for a summer kitchen. Whether relaxing in privacy or entertaining guests, this sun-drenched terrace offers an unparalleled setting with Palma's skyline as your backdrop.

Inside, the penthouse blends refined elegance with contemporary comfort and 240 sqm living area. Three beautifully appointed bedrooms feature warm wooden flooring, built-in wardrobes, and stylish en-suite bathrooms. The master suite is a true sanctuary, boasting a freestanding bathtub positioned to capture the breathtaking views, creating an atmosphere of pure indulgence.

The open-plan kitchen, centred around a spacious island, flows effortlessly into the bright and airy living area. Floor-to-ceiling glass doors open onto one of the terraces, ensuring seamless indoor-outdoor living and a spectacular setting for everyday life and entertaining alike.

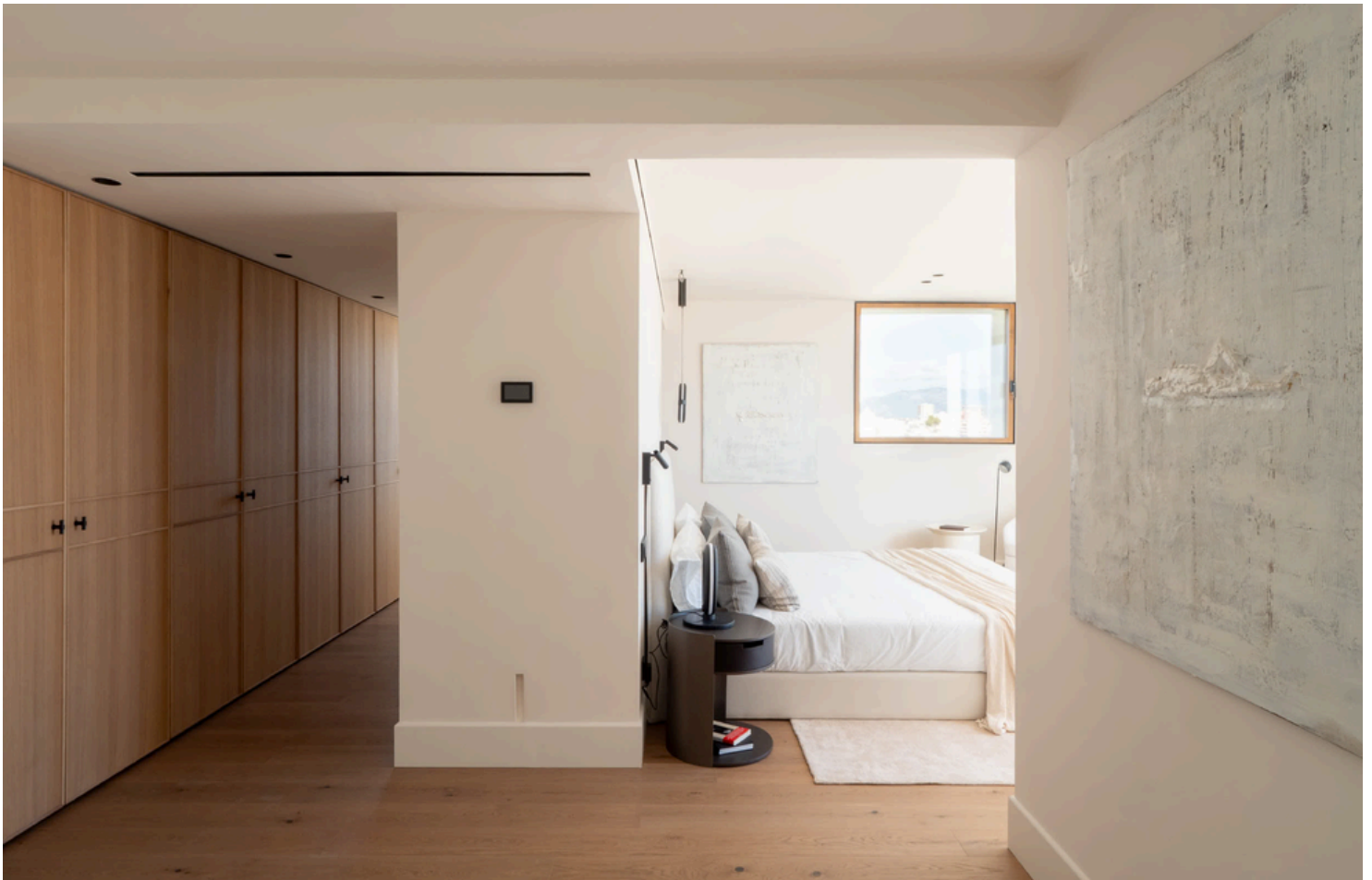
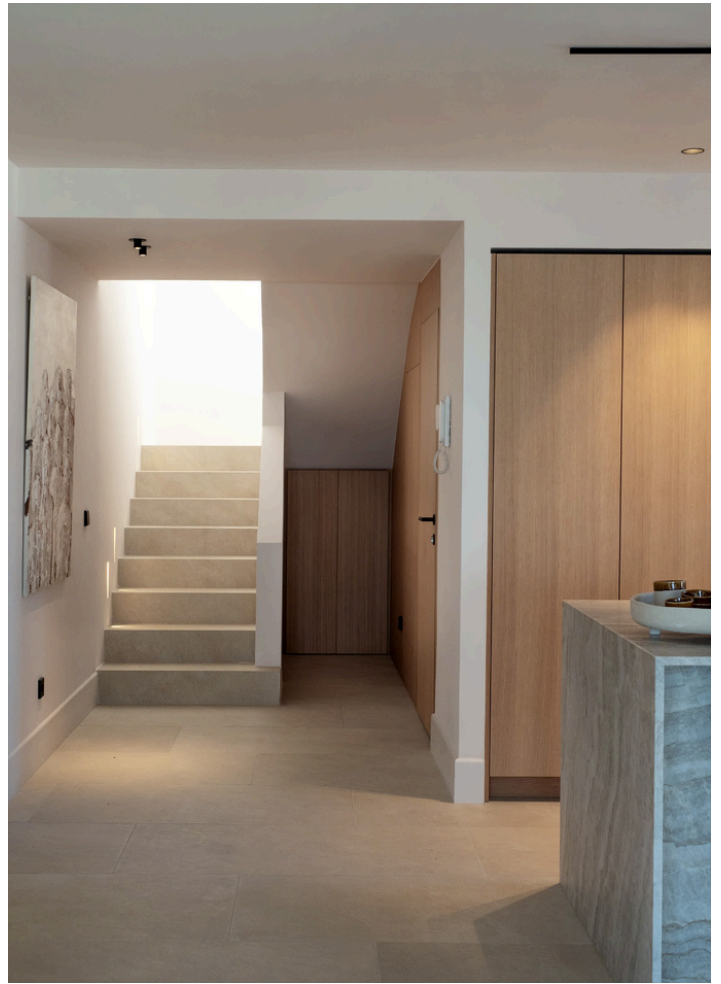
Additional amenities include a guest WC, two private garage parking spaces, and two storage rooms, offering both practicality and convenience. This exceptional penthouse combines refined luxury, remarkable views, and modern living—an outstanding opportunity to own a truly distinctive home in one of Palma's most sought-after neighbourhoods.





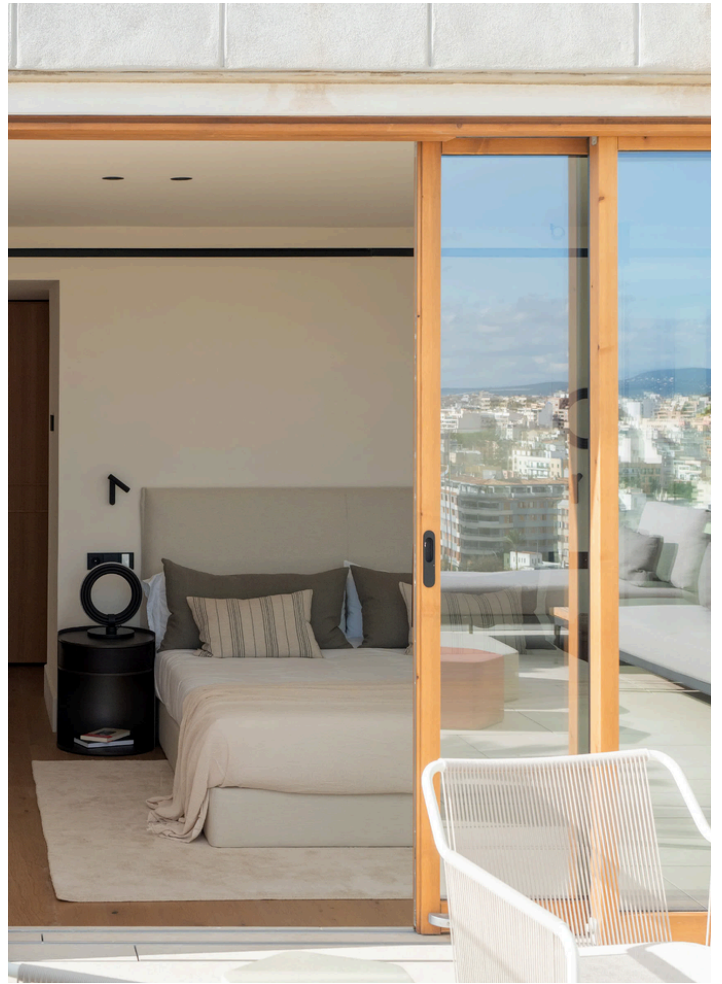


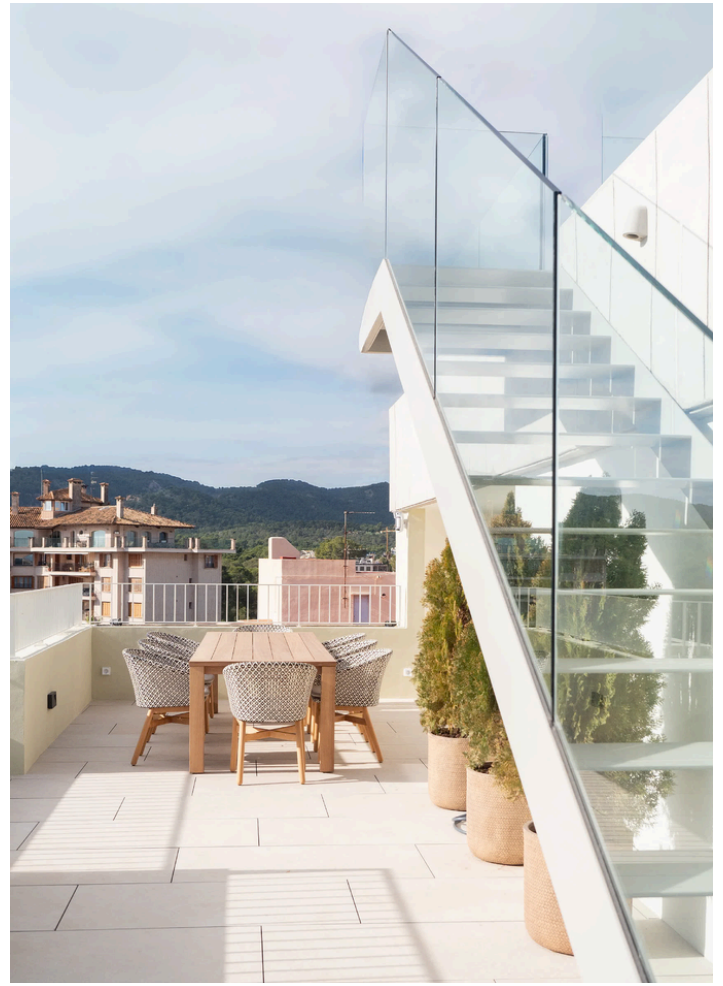
















9TH FLOOR PLAN



- 1. Entrance hall: 4,43 m²
- 2. Living area & Kitchen: 73,30 m²
- 3. Laundry room: 8,46 m²
- 4. Hall: 4,41 m²
- 5. Bedroom 1 (En-suite): 18,53 / 6,43 m²
- 6. Bedroom 2 (En-suite): 11,56 / 4,88 m²
- 7. WC: 2,00 m²
- 8. Terrace 1: 4,51 m²
- 9. Terrace 2: 6,38 m²
- 10. Terrace 3: 14,89 m²

**These plans and renders are for illustrative purposes only and the values presented in the board are estimates. They do not constitute part of the contract or a guarantee*